

# NEW DELFIN MODELS

*Follow up Event Delfin 25 Years Forward*



# Contents

- 1) New Torch. Industrial vacuum for extraction of torch welding fumes
- 2) New vacuum cleaners for Clean Rooms
- 3) New 802 W PUMP (wet vacuum with integrated immersion pump)
- 4) New high volum 600 – 1000 lt. separators and 600 lt. separator with integrated vacuum unit
- 5) Innovations in Tecnoil range
- 6) Feedback!

# New Torch: efficient extraction in your welding area

*The best solution to remove torch welding fumes at the source*

TORCH is a compact and highly mobile vacuum unit, designed to eliminate on the spot welding fumes generated by torch welding devices even in working places with limited space and difficult access.

The Auto start / stop integrated device makes the use of the machine easy and efficient: the extraction starts and stops automatically and in simultaneous correspondence with the start and stop of the welding torch.

Efficiency in fume extraction (thanks to the motor guaranteeing constant suction and extraction performance, even with variable flow volumes and pressures), user friendliness, low noise level, energy saving are some of the main key assets of the Torch .



25 YEARS FORWARD

The logo for Delfin, featuring a stylized red and white fish-like shape above the word "delfin" in a lowercase, sans-serif font.

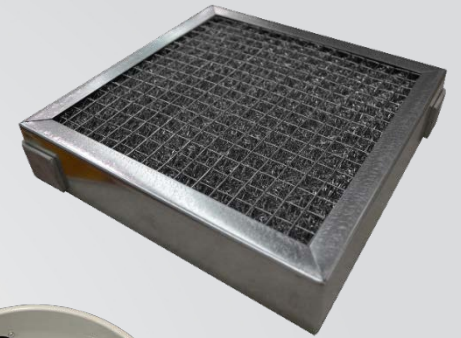
A logo celebrating a 25th anniversary. It features a large, stylized number "25" in red and white, with the text "1991-2016" above it and "ANNIVERSARIO" below it.

# New Torch: efficient extraction in your welding area

*The best solution to remove torch welding fumes at the source*



- 1 powerful by-pass motor
- 100% steel construction
- Filter clogging sensor
- Spark trap filter
- DUSTOP filter cleaning system
- Detachable container
- Automatic start / stop synchronized with welding device



<b>301 TORCH</b>		
<b>VOLTAGE</b>	V	230 / 1~
<b>POWER</b>	kW	1,15
<b>WATER LIFT MAX.</b>	mm.H <sub>2</sub> O	2400
<b>AIR FLOW MAX.</b>	m <sup>3</sup> /h	180
<b>FILTER TYPE</b>	Spark trap + Polyester cartridge	
<b>FILTER CLASS</b>	M	
<b>DRY FILTER SURFACE</b>	cm <sup>2</sup>	13000
<b>SHAVING GRID VOLUME</b>	Lt.	13
<b>DIMENSIONS</b>	cm.	48x60x130 h
<b>SUCTION INLET Ø</b>	Ø mm.	50
<b>ADDITIONAL FILTER</b>	Anti sparks filter	

25 YEARS FORWARD



# The new line CR

*Industrial vacuums for CLEAN ROOMS*

The main feature of a cleanroom is the presence of a pure air (air with a minimum, very low content of dust micro-particles in suspension). Clean rooms are used in specific industries such as chemicals, pharmaceuticals, mechanics and electronics, where it is essential to avoid product contamination from airborne particles and other impurities.

In these areas it is necessary to sterilize the working environments through the strictest cleaning procedures and use the of specific equipment, including vacuums that comply with cleanrooms standards :

## Cleanrooms Vacuum cleaner standards:

- Complete stainless steel construction
- Easy to disassemble
- Highest H / HEPA absolute filtration
- Easy filter replacement
- Safe disposal of vacuumed dust
- Autoclavable vacuum parts and accessories



# The new line CR

*Industrial vacuums for cleanrooms*



DRY applications

**CR1100D**

- Autoclavable
- H 14 double stage filtration
- Stainless steel construction
- Safe bag (on request)



WET&DRY applications

**CR1800WDH**

		CR1100D	CR1800WDH
VOLTAGE	V	230	230
POWER	kW	1,2	1,8
IP PROTECTION	IP	-	55
INSULATION CLASS		B	H
WATER LIFT	mmH <sub>2</sub> O	2700	2300
AIR FLOW MAX.	m <sup>3</sup> /h	200	250
PRIMARY FILTER	CAT / cm <sup>2</sup>	PTFE – 2.600	PTFE – 2.600
ABSOLUTE FILTER INLET	CAT / cm <sup>2</sup>	OPZ	H14 – 2.000
FILTER OUTPUT	CAT / cm <sup>2</sup>	H14 – 2.000	H14 – 2.000
∅ SUCTION INLET	mm	40	40
VOLUME	lt	12	40
NOISE INLET	dB(A)	75	75
WEIGHT	kg	27	69
DIMENSIONS	cm	46x46x76	50x53x124
VACUUM GAUGE		√	√
POWER LIGHT		√	√
HOURMETER		-	OPZ

25 YEARS FORWARD



ANNIVERSARIO

# New 802 W PUMP



Improved and redesigned version , with possibility for continuous liquid discharge through the integrated immersion pump

- Stainless Steel construction
- PPL Separation filter for solid material
- PPL anti-foam 300 micron wet filter
- Floating device and liquid discharge hose
- Possibility to vacuum and pump out liquids simultaneously



25 YEARS FORWARD



802 W PUMP		
VOLTAGE	V	230 / 1~
POWER	kW	2,3
WATER LIFT MAX.	mm.H <sub>2</sub> O	2500
AIR FLOW MAX.	m <sup>3</sup> /h	360
FILTER TYPE		PPL filter
WET FILTER SURFACE	cm <sup>2</sup>	4.500
VOLUME	Lt.	65
DIMENSIONS	cm.	65x50x106 h
SUCTION INLET	Ø mm.	50
ADDITIONAL FILTER		PPL
DISCHARGE HOSE	mm	32



# New 600-1000 liters preseparators

*Increased safety, functionality and user friendliness for your daily work.*

The new Delfin separators feature a newly designed material discharge system, that increases safety and user friendliness by better controlling the movement and speed during the discharge process.

It is the perfect solution for all the applications requiring collection and transport of large quantities of materials.

The new system increases user friendliness and safety for the operator. The slanted structure enables the total discharge of the collected materials.

## MAIN ASSETS

- Complete, quick and controlled discharge through frontal side
- Improved dust separation efficiency through redesigned cyclone
- High collection capacity, ideal for collection of large quantities of material





# New 600 liters Vacuuming separator

*Increased safety, functionality and user friendliness for your daily work.*

The 600-liter vacuuming separator is designed to work in every respect as a vacuum cleaner, thanks to the suction head with the integrated filter placed upon the large separator for recovery of large quantities of material (up to 600 lt.).

- 100 % steel built
- Single phase or three phase suction unit
- Forklift intakes for easy discharge
- Complete, quick and controlled discharge through frontal side
- High collection capacity, ideal for collection of large quantities of material

VOLTAGE	V	230 / 1~
POWER	kW	3,45
WATER LIFT MAX.	mm.H <sub>2</sub> O	2.500
AIR FLOW MAX.	m <sup>3</sup> /h	540
MAIN FILTER	CAT / cm <sup>2</sup>	L-20.000
NOISE LEVEL	dB(A)	76
CAPACITY	lt	600
SUCTION INLET Ø	Ø mm.	80
DIMENSIONS	cm	98 x 125 x 224



25 YEARS FORWARD



1991-2016  
**25**  
ANNIVERSARIO

# PROTOTYPE Tecnoil models

- The new Tecnoil are compact and heavy duty industrial machines , designed for the collection and recovery of liquids (lubricant, coolant cutting oil etc.) and metal chips from machine tools .
- This newly designed range provides innovative solutions for a number of applications in engineering, manufacturing and metalworking, for cleaning and maintenance of machine tools and CNC centers.



# NEW TECNOIL 100IF 3MOTORS

*New liquid discharge system through reversed airflow*

- ❑ 3 powerful motors single-phase (3,45 Kw)
- ❑ 100 liters capacity (liquids)
- ❑ 40 liters Shaving grid volume
- ❑ Visual liquid level control
- ❑ Sieve grid for chips filtration with detachable container
  
- ❑ **Powerful system to discharge liquids by reversing the motor air flow (about 100 liters /min)**



25 YEARS FORWARD



1991 - 2016  
**25**  
ANNIVERSARIO

# PROTOTYPE TECNOIL 200 M/T IF

*The perfect mix of compactness , power and user friendliness*

## TECHNICAL FEATURES

- 3 powerful motors single-phase (3,45 Kw) or three-phase/single-phase turbine(3 Kw)
- 200 liters collection capacity (liquids)
- 40 liters capacity chips basket
- Visual liquid level control
- Powerful system to discharge liquids by reversing the motor air flow (about 100 liters /min)
- Swiveling suction inlet
- Easy handling and disposal of metal chips
  
- Optional independent pump for faster liquid disposal (up to 300 lt. / min)



# PROTOTYPE TECNOIL 200 M/T IF

*The perfect mix of compactness , power and user friendliness*



## BENEFITS

- Modular construction and multiple power options:
  - ✓ 3 motors single-phase
  - ✓ Single or three-phase side channel blower
- Large volume container for liquids and chips recovery
- Easy collection and disposal of metal chips
- User friendliness



25 YEARS FORWARD



# PROTOTYPE TECNOIL 300 T4 IF

*New reverse air flow system for the fast discharge of liquids*

## TECHNICAL FEATURES

- Three-phase turbine (4 Kw)
- 300 liters capacity (liquids)
- 60 liters capacity metal chips basket
- Visual liquid level control
- New reverse air flow system for the fast discharge of liquids** (about 100 liters /min)
- Swiveling suction inlet
- Easy handling and disposal of metal chips
- Optional independent pump for faster liquid disposal (up to 300 lt. / min)



# PROTOTYPE TECNOIL 300 T4 IF

*New reverse air flow system for the fast discharge of liquids*



## BENEFITS

- Designed and built for the engineering and mechanical industry
- Cleaning and recovery of coolant and lubricants
- Large recovery container
- Easy collection and disposal of metal chips
- User friendliness and safety
- Saves time by minimizing CNC machines stand by

25 YEARS FORWARD



1991 - 2016  
**25**  
ANNIVERSARIO

# New Prototypes Tecnoil

## COMPETITIVE ADVANTAGES

- Recovery and re-use of cooling lubricants and emulsions
- Reducing stand by time of machine tools and production lines
- Increased safety features
- Safe and environment friendly collection and disposal
- Quick and efficient cleaning of machine tools and working environment.



		<b>Tecnoil100IF</b>	<b>Tecnoil200 M IF</b>	<b>Tecnoil200 T IF</b>	<b>Tecnoil300 T IF</b>
	V	230 / 1~	230 / 1~	400 / 3~	400 / 3~
<b>POWER</b>	KW	3,45	3,45	3	4
<b>WATER LIFT MAX.</b>	mm.H <sub>2</sub> O	2500	2300	3000	3600
<b>AIR FLOW MAX.</b>	M <sup>3</sup> /h	540	540	320	400
<b>METAL CHIPS BASKET VOLUME</b>	Lt.	40	40	40	60
<b>LIQUIDS VOLUME</b>	Lt.	100	200	200	300
<b>SUCTION INLET Ø</b>	Ø mm.	50	50	50	50



# Feedback

*We value your opinion!*

With regard to the two new prototypes of TECNOIL range , TECNOIL 200 and TECNOIL 300 we ask you to give us your opinion on the 4 points listed below , filling in this mail [CLICK HERE:](#)

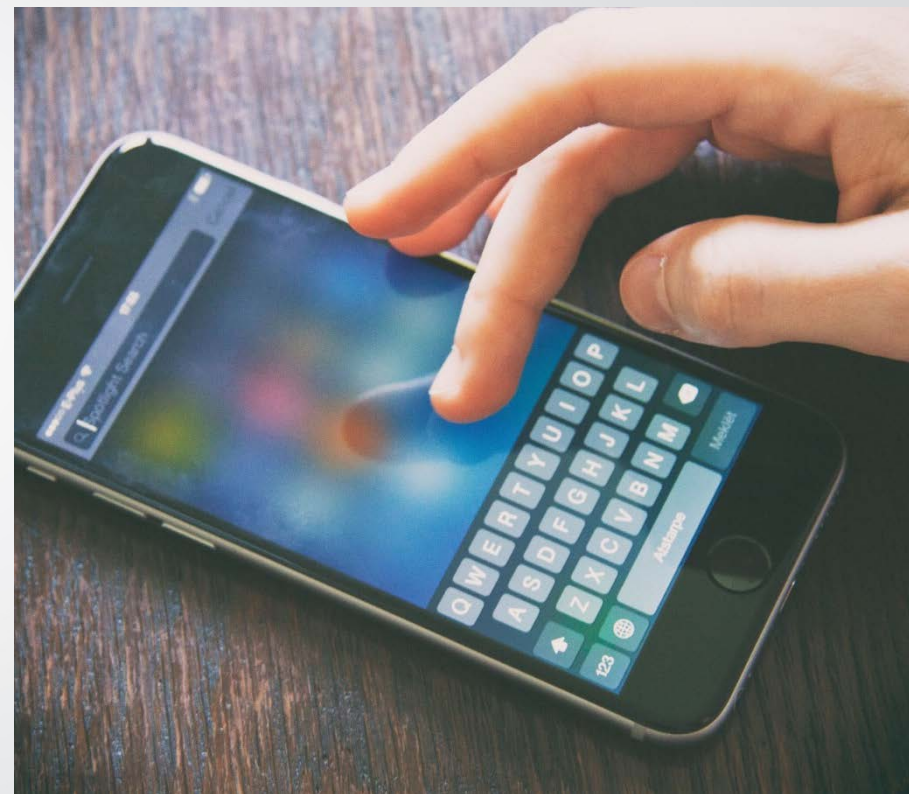
- ❖ Functionality
- ❖ Design
- ❖ Technical features
- ❖ Other remarks

# Contact Us!

*Your Sales Manager will give you all the info you need !*

For any more info on the new models or any other Delfin product feel free to contact your Sales Manager or visit the website [www.delfinvacuums.it](http://www.delfinvacuums.it).

To be always updated about Delfin's latest innovations, products, etc. follow us on our social channels :



25 YEARS FORWARD

