



GB

- Max. presión: 6,000 Pa
- Máx. volumen de aire: 8,500 m³/h
- Equipado con turbina cerrada válido para transporte de aire contaminado
- Construido en chapa de acero de 3-4 mm
- Equilibrado estática y dinámicamente.
- Testado de acuerdo a la ISO 5801



Fan	Achieved efficiency	Measurement category	Efficiency category	Efficiency grade	VSD	Production year	Manufacturer page	Modul number/ type	Rated motor power input, flow rate and pressure			Rpm.	Specific ratio	Disposal page	Environment page	Mounting measurement page
									kW	m³/h	Pa (Ps)					
03 400 700	50,2	D	Total	•	•	•	•	RV 35/1-C2	2,84	1590	3870	2901	•	A21	A21	A21
03 401 700	56,6	D	Total	•	•	•	•	RV 35/2-C2	3,34	1916	3970	2939	•	A21	A21	A21
03 402 000	62,1	D	Total	64	No	CE mark	A21	RV 35/3-C2	4,43	2705	3940	2945	1,04	A21	A21	A21
03 406 400	64,1	D	Total	64	No	CE mark	A21	RV 45-C2	7,43	5405	3060	2933	1,03	A21	A21	A21
03 410 400	68,4	D	Total	64	No	CE mark	A21	RV 50-C2	8,94	6560	3540	2942	1,04	A21	A21	A21
03 415 000	61,6	D	Total	•	•	•	•	RV 60-C2	13,81	11305	2760	2944	•	A21	A21	A21
03 417 300	65,4	D	Total	•	•	•	•	RV 70-C2	17,95	12270	3650	2955	•	A21	A21	A21
03 418 00001	78,2	D	Total	64	No	CE mark	A21	RV 80-C2	27,14	13557	5640	2977	1,06	A21	A21	A21
03 418 50001	69,1	D	Total	•	•	•	•	RV 85-C2	32,44	19167	4220	2968	•	A21	A21	A21
03 419 00001	78,8	D	Total	64	No	CE mark	A21	RV 90-C2	30,39	13724	5570	2983	1,06	A21	A21	A21
03 420 000	55,7	D	Total	64	No	CE mark	A21	RV 35-C4	0,46	1445	940	1446	1,01	A21	A21	A21
03 422 400	56,2	D	Total	64	No	CE mark	A21	RV 50-C4	1,06	3710	730	1449	1,01	A21	A21	A21
03 423 000	63,8	D	Total	64	No	CE mark	A21	RV 60-C4	1,68	4350	980	1476	1,01	A21	A21	A21
03 425 300	57,6	D	Total	64	No	CE mark	A21	RV 70-C4	1,76	4950	930	1470	1,01	A21	A21	A21
03 426 00001	68,4	D	Total	64	No	CE mark	A21	RV 80-C4	3,18	11660	680	1462	1,01	A21	A21	A21
03 427 00001	66,4	D	Total	64	No	CE mark	A21	RV 85-C4	3,46	7535	1260	1481	1,01	A21	A21	A21
03 428 00001	67,4	D	Total	64	No	CE mark	A21	RV 90-C4	3,86	8170	1360	1479	1,01	A21	A21	A21

• Not approved according to EU327/2011 ERP 2015

May be mounted on clean air side of Gram filter units as transport fan according to EU 327/2011 and EN 13349/2010

Available hot-galvanized or stainless. / Lieferbar feuerverzinkt oder aus Edelstahl.

Colour/Farbe: RAL 5007 (structure/Struktur)

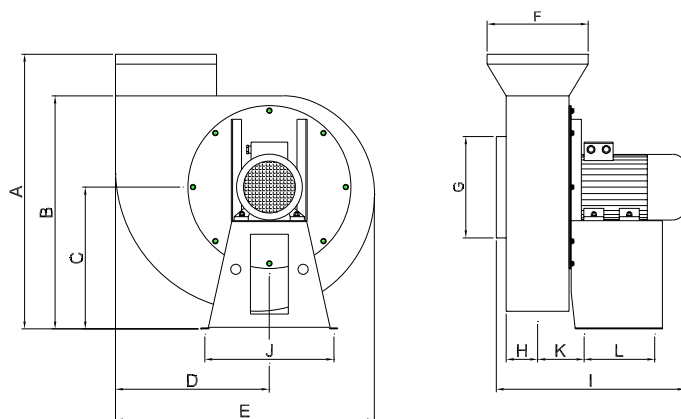
V. Aa. Gram A/S

LYSBJERGVEJ 10 • HAMMELEV • DK-6500 Vojens

TELEPHONE +45 74 52 30 75 • TELEFAX +45 74 53 01 64

E-MAIL: info@vaagram.dk • INTERNET: www.vaagram.com





Type	Order no.	A	B	C	D	E	F	G	H	I	J	K	L
RV 35/1-C2	03 400 700	935	765	465	385	705	ø250	ø250	66	548	375	129	235
RV 35/2-C2	03 401 700	935	765	465	385	705	ø250	ø250	73	536	375	136	237
RV 35/3-C2	03 402 000	935	765	465	385	705	ø250	ø250	80	550	375	143	235
RV 45-C2	03 406 400	1012	829	515	485	837	ø315	ø315	177	737	500	193	300
RV 50-C2	03 410 400	1017	829	515	507	859	ø400	ø400	161	870	500	217	300
RV 60-C2	03 415 000	1235	1066	705	610	1025	ø500	ø500	160	910	558	309	330
RV 70-C2	03 417 300	1230	1066	705	671	1086	ø630	ø630	176	1087	558	322	330
RV 80-C2	03 418 000	1398	1145	739	806	1275	ø800	ø800	189	1339	600	224	440
RV 85-C2	03 418 500	1398	1145	739	806	1275	ø800	ø800	202	1348	600	238	440
RV 90-C2	03 419 000	1398	1145	739	806	1275	ø800	ø800	214	1440	600	250	440
RV 35-C4	03 420 000	935	765	465	385	705	ø250	ø250	80	550	375	143	235
RV 50-C4	03 422 400	1017	829	515	507	859	ø400	ø400	161	747	500	217	300
RV 60-C4	03 423 000	1235	1066	706	610	1025	ø500	ø500	160	910	558	309	330
RV 70-C4	03 425 300	1230	1066	705	671	1086	ø630	ø630	176	997	588	322	330
RV 80-C4	03 426 000	1398	1145	739	806	1275	ø800	ø800	189	1094	600	224	440
RV 85-C4	03 427 000	1398	1145	739	806	1275	ø800	ø800	202	1108	600	238	440
RV 90-C4	03 428 000	1398	1145	739	806	1275	ø800	ø800	214	1118	600	250	440

Type	Order no.	Volt [V]	Rpm.	[kW]	Max. amp.	Start current	Weight [kg]
RV 35/1-C2	03 400 700	3x400	2800	3,00	6,20	51,50	79
RV 35/2-C2	03 401 700	3x400	2800	4,00	7,70	65,50	91
RV 35/3-C2	03 402 000	3x400	2910	5,50*	10,30	93,80	104
RV 45-C2	03 406 400	3x400	2800	7,50	13,20	112,20	125
RV 50-C2	03 410 400	3x400	2930	11,00*	19,50	156,00	145
RV 60-C2**	03 415 000	3x400	2920	15,00	26,90	188,30	225
RV 70-C2**	03 417 300	3x400	2928	22,00	39,50	296,30	280
RV 80-C2**	03 418 000	3x400	2800	30,00	52,00	327,60	355
RV 85-C2**	03 418 500	3x400	2800	37,00	63,00	378,00	370
RV 90-C2**	03 419 000	3x400	2800	45,00	78,00	483,60	450
RV 35-C4	03 420 000	3x400	1390	0,75	2,20	9,30	62
RV 50-C4**	03 422 400	3x400	1410	1,50	3,40	21,80	82
RV 60-C4**	03 423 000	3x400	1425	2,20	4,50	32,90	125
RV 70-C4**	03 425 300	3x400	1415	3,00	6,60	52,80	141
RV 80-C4**	03 426 000	3x400	1400	4,00	8,40	56,30	152
RV 85-C4**	03 427 000	3x400	1400	5,50	11,50	86,30	170
RV 90-C4**	03 428 000	3x400	1400	5,50	11,50	86,30	180

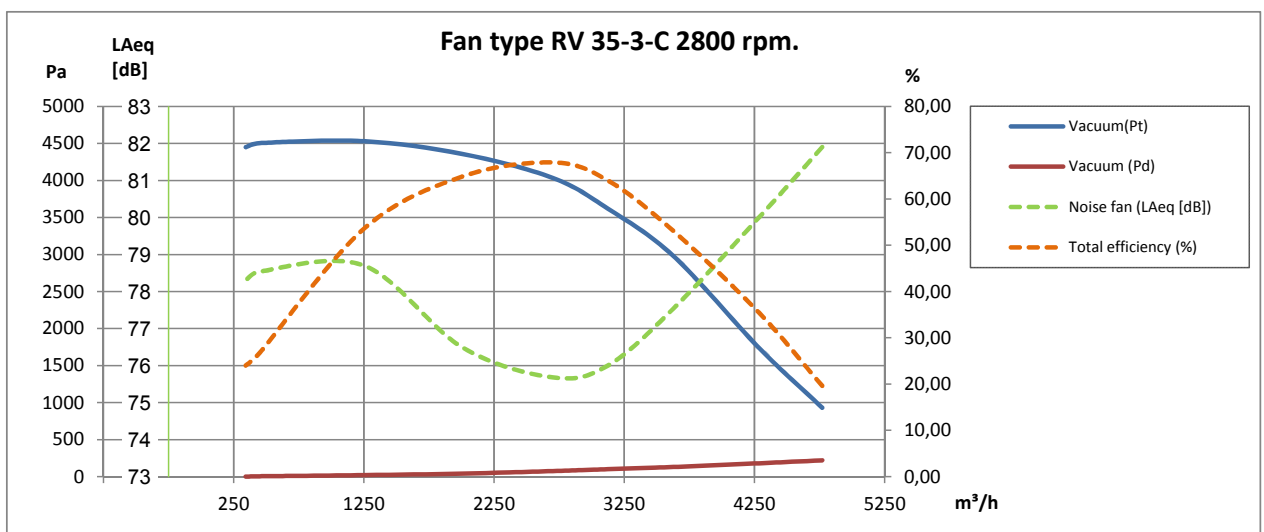
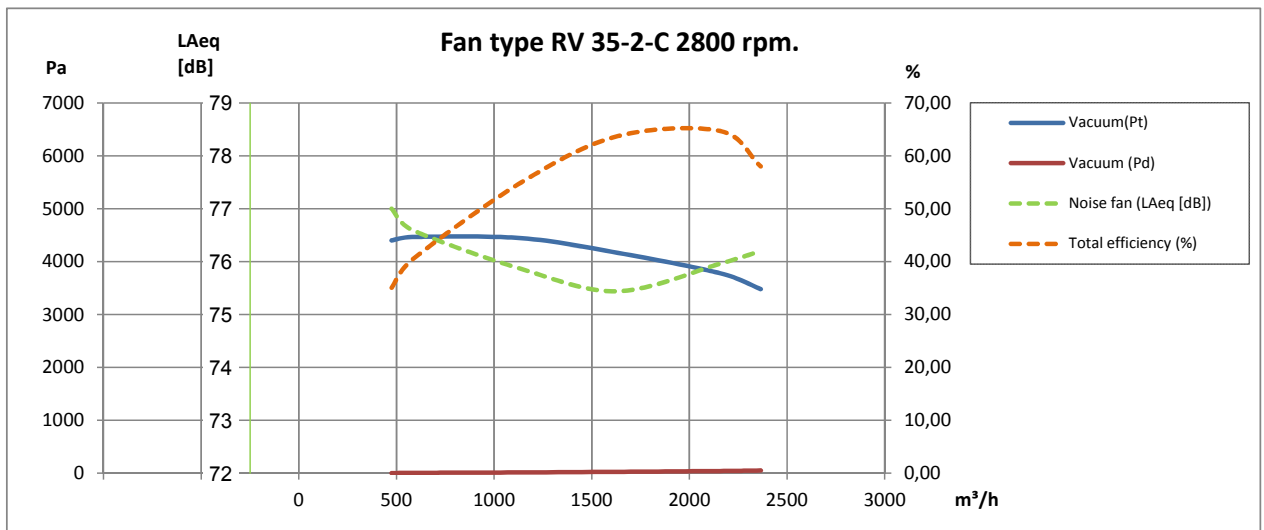
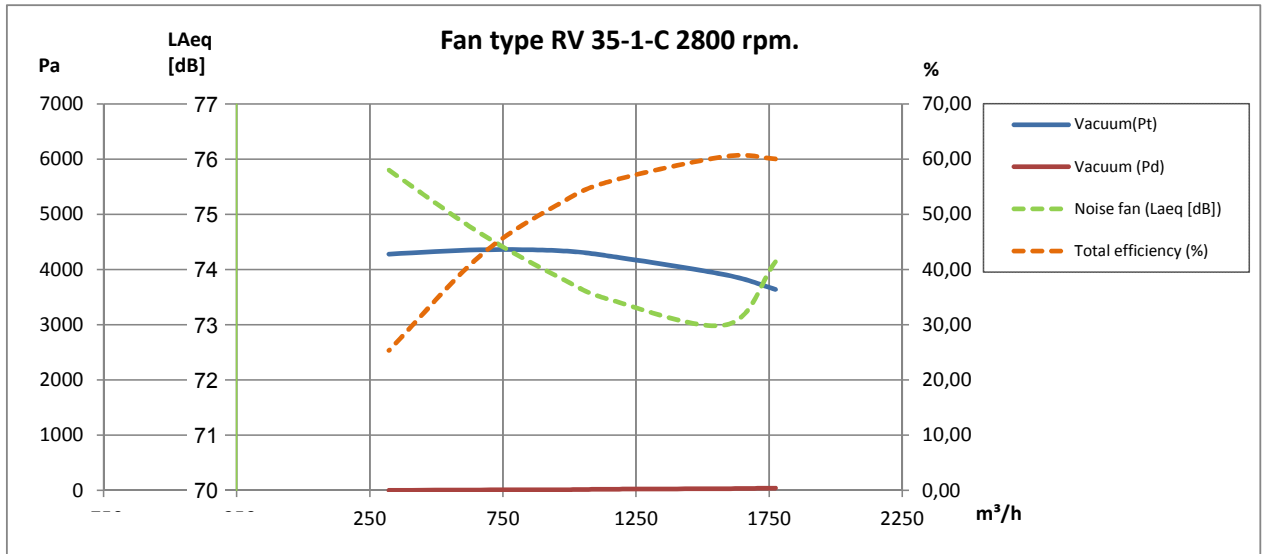
* Increased efficiency
** Hard starting

Motor data ≥ 0.75kW, 3x400V, according to IE2-motors.

Rev. 02/15 Recht auf Änderungen bleibt vorbehalten. / Data is subject to alterations.



2800 rpm./Upm.:



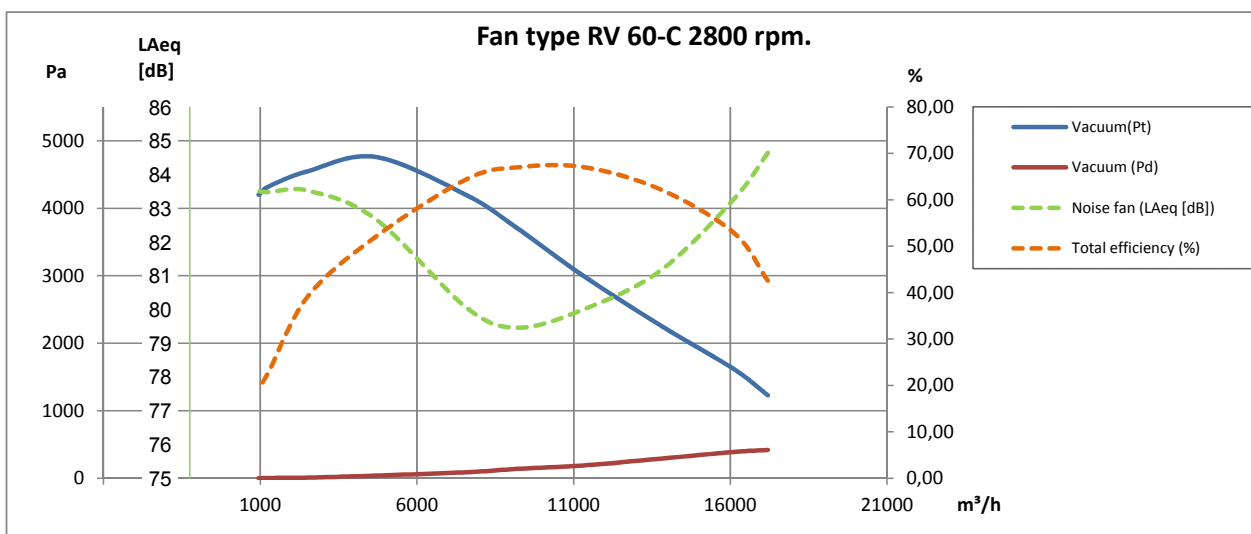
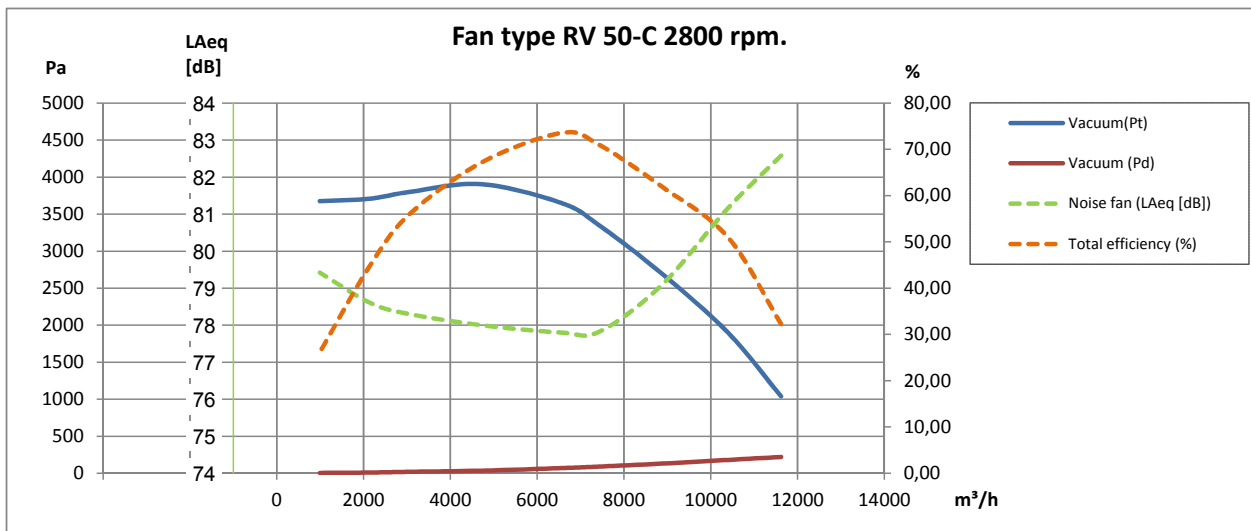
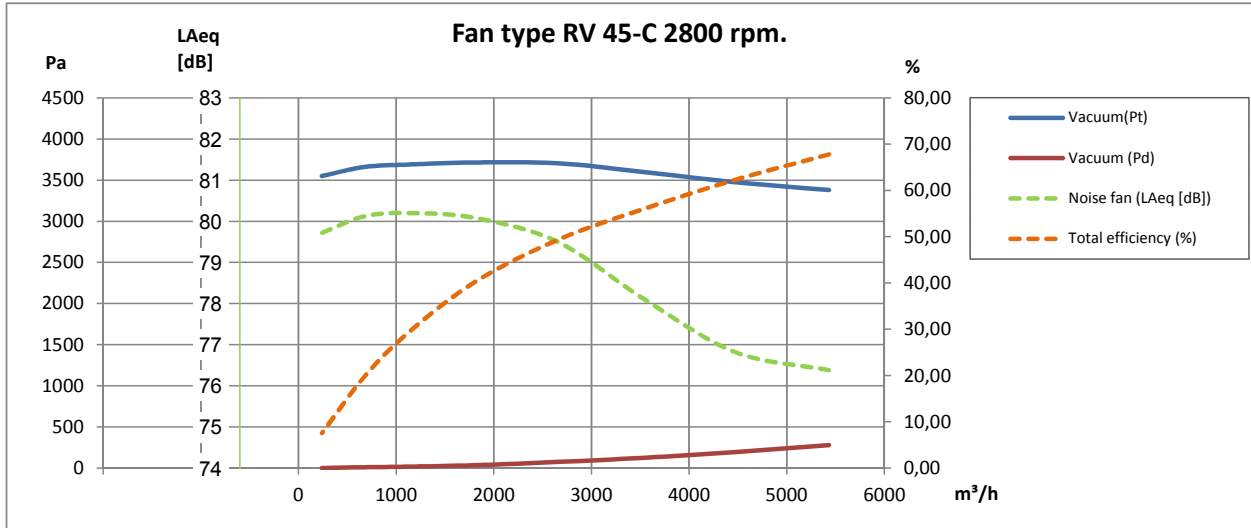
Recht auf Änderungen bleibt vorbehalten. / Data is subject to alterations. Rev. 02/15

V. Aa. Gram A/S

LYSBJERGVEJ 10 • HAMMELEV • DK-6500 Vojens
 TELEPHONE +45 74 52 30 75 • TELEFAX +45 74 53 01 64
 E-MAIL: info@vaagram.dk • INTERNET: www.vaagram.com



2800 rpm./Upm.:

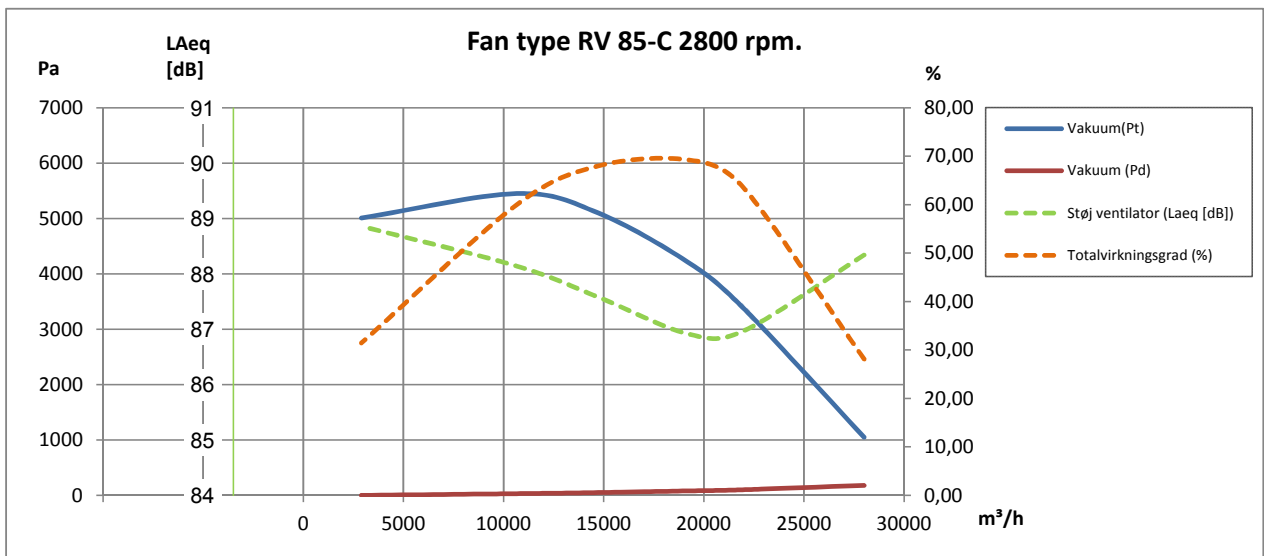
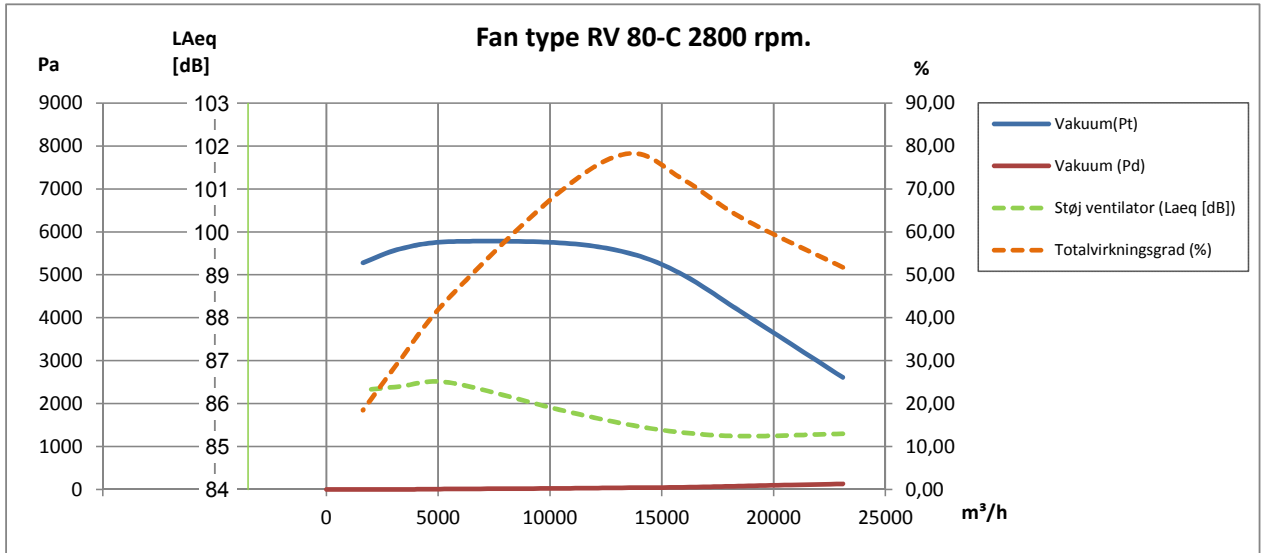
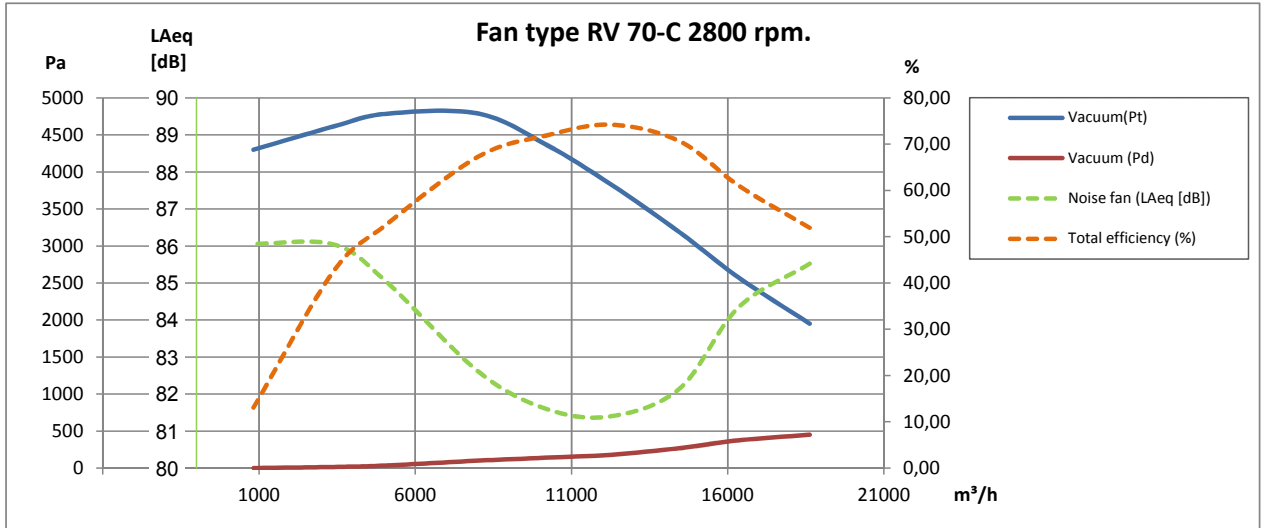


Recht auf Änderungen bleibt vorbehalten. / Data is subject to alterations.

Rev. 02/15



2800 rpm./Upm.:



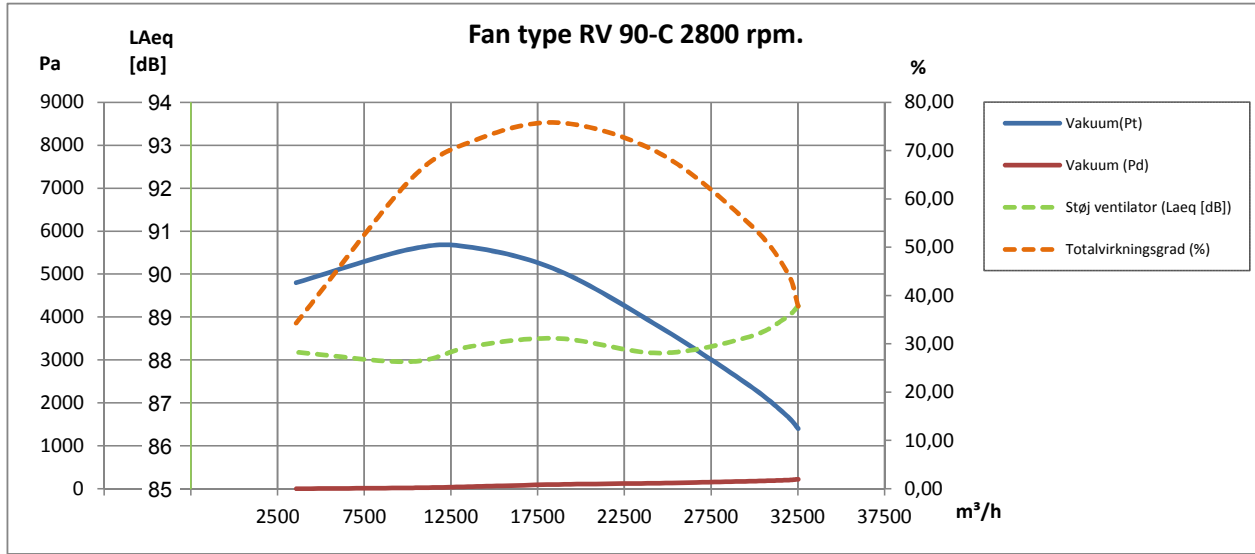
Recht auf Änderungen bleibt vorbehalten. / Data is subject to alterations.
Rev. 02:15

V. Aa. Gram A/S

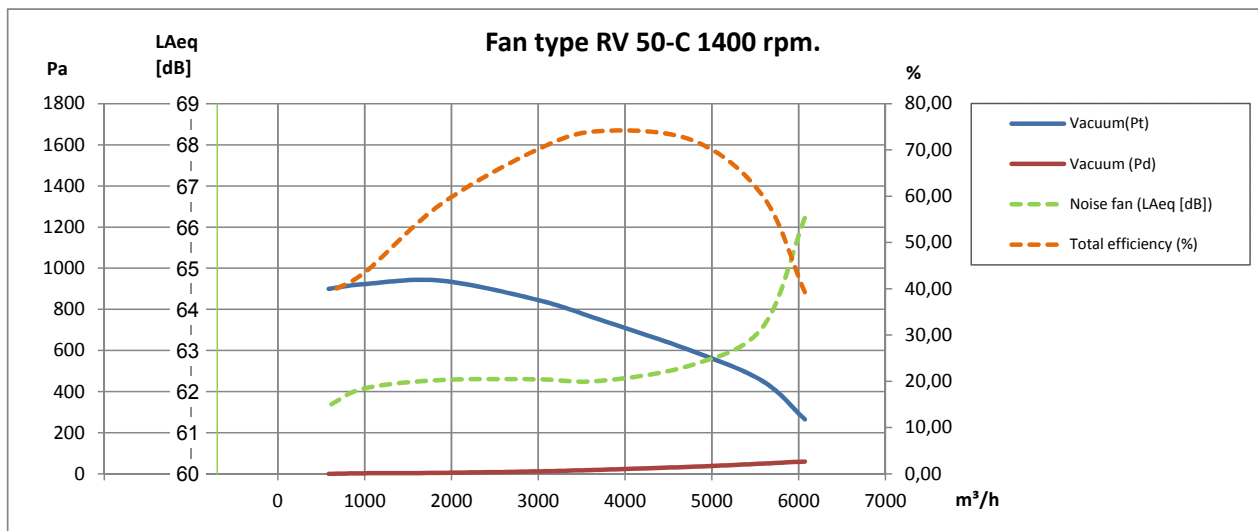
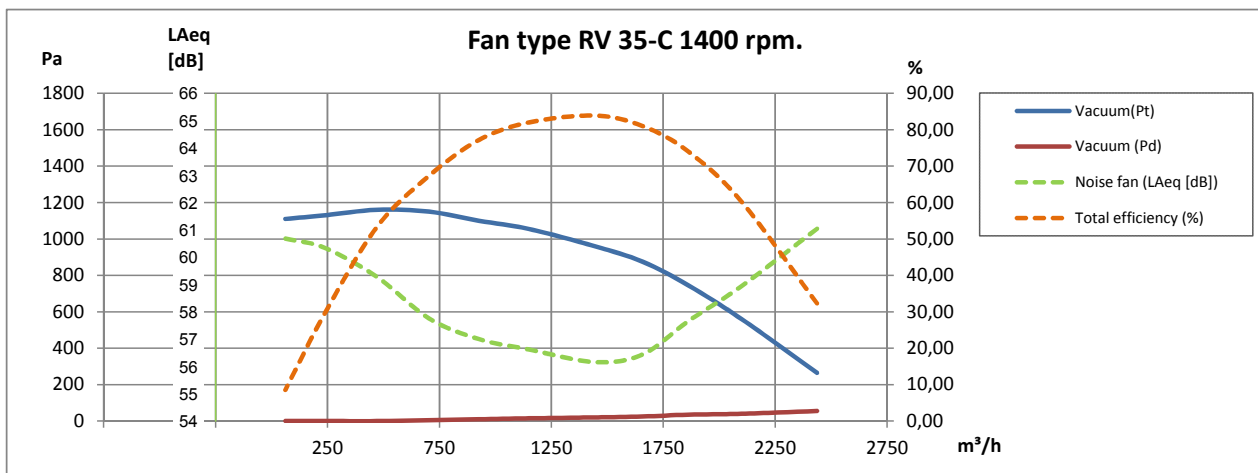
LYSBJERGVEJ 10 • HAMMELEV • DK-6500 Vojens
 TELEPHONE +45 74 52 30 75 • TELEFAX +45 74 53 01 64
 E-MAIL: info@vaagram.dk • INTERNET: www.vaagram.com



2800 rpm./Upm.:

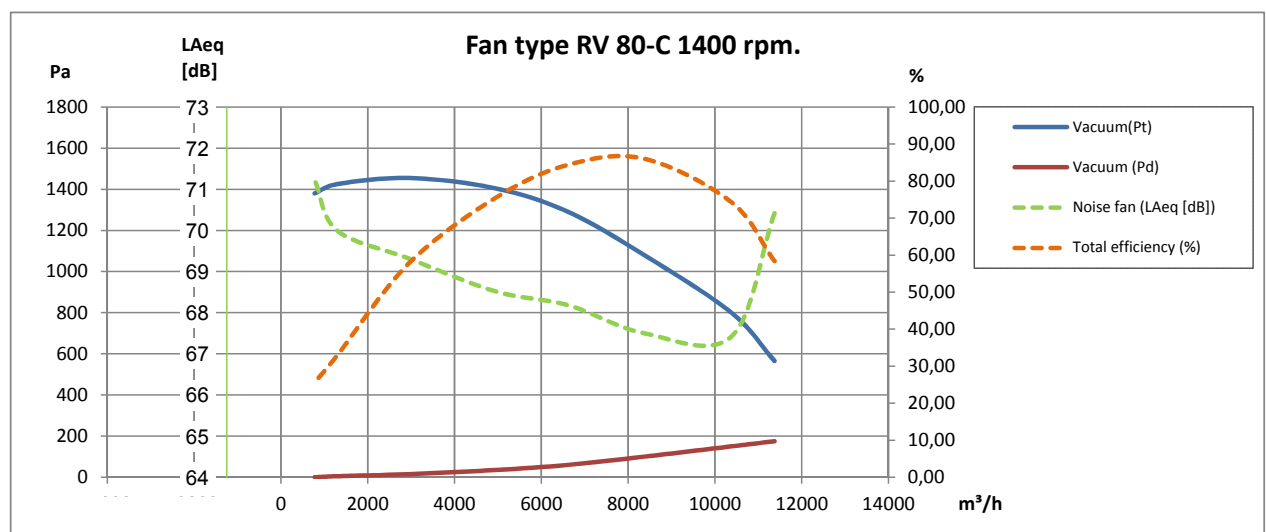
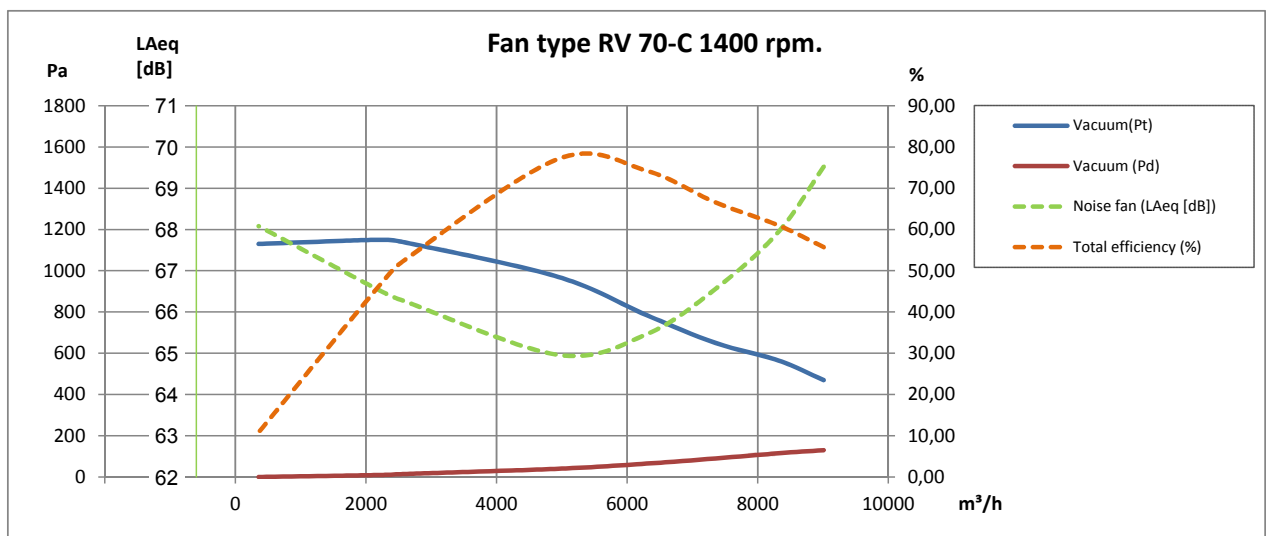
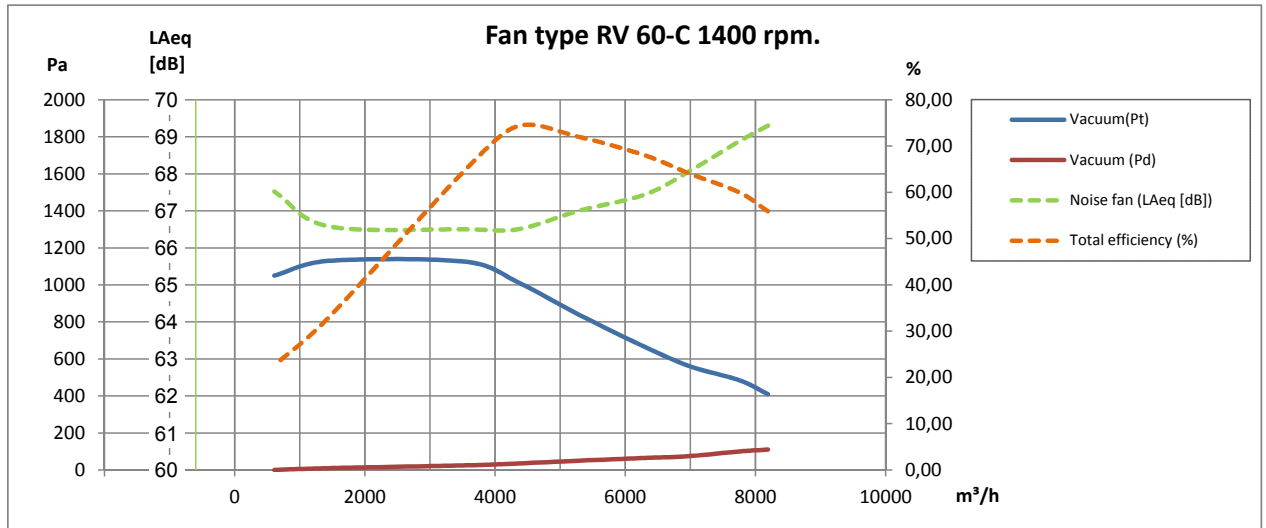


1400 rpm./Upm.:



Rev. 02.15 Recht auf Änderungen bleibt vorbehalten. / Data is subject to alterations.

1400 rpm./Upm.:



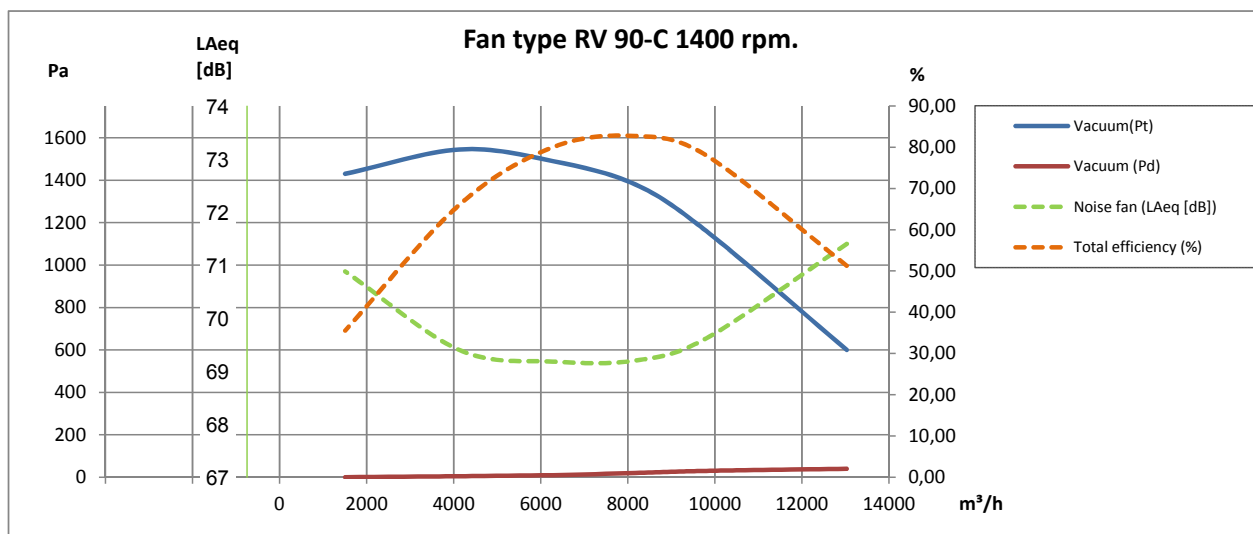
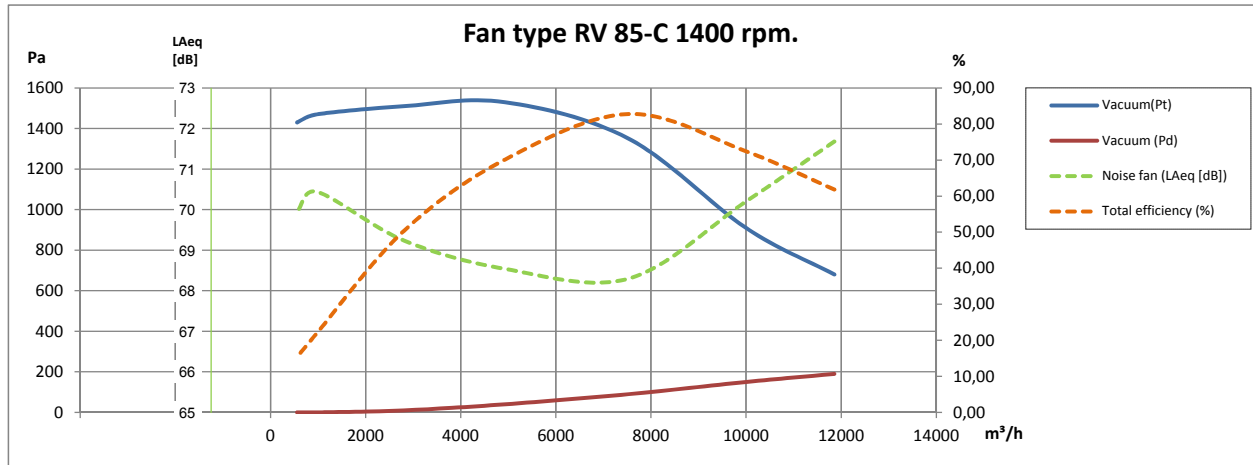
Recht auf Änderungen bleibt vorbehalten. / Data is subject to alterations. Rev. 02.15

V. Aa. Gram A/S

LYSBJERGVEJ 10 • HAMMELEV • DK-6500 Vojens
 TELEPHONE +45 74 52 30 75 • TELEFAX +45 74 53 01 64
 E-MAIL: info@vaagram.dk • INTERNET: www.vaagram.com



1400 rpm./Upm.:



Recht auf Änderungen bleibt vorbehalten. / Data is subject to alterations.

Rev. 02/15

